



The Annual Report of the West Wycombe Parish Council 2007/8

This publication is based upon the report given by Cllr. Mrs J Smith, Chairman of the West Wycombe Parish Council at the Annual Parish Meeting on 1st May 2008. Further reports from West Wycombe Community Association, The National Trust, West Wycombe Combined School, West Wycombe Library Action Group and The Parochial Church Council can be found on our website www.westwycombe.org.uk

Plans for the future.....

In comparison to previous years this past year has been reasonably quiet because we have had no major projects to supervise.

There are many things we would like to do in the Parish such as street lights on Church Lane by the school and also a light by the toilets in Meads Yard.

We are at present investigating leasing the Pedestal Playing Field and to perhaps create a children's play area there. We know from the Parish appraisal we carried out a couple of years ago that a play ground is something many people would like in the Parish but up to now we have not had anywhere we could use.

The cost of these types of projects is expensive and we felt it would be too much to precept for in one year but we plan to save towards these ideas over the coming years.

Planting for the future.....

We have had trees and shrubs planted near the Pedestal monument to stop vehicles parking there and daffodils have been planted in the grass verge by the flint wall leading into the Village.

Changes

It has been a year of changes, mostly handed down by Central Government. Almost every week there are training sessions to attend and meetings to keep us up to date on the latest developments in planning or the way Bucks County Council and Wycombe District Council want us to work with them to bring the best services we can to our community.

Bollards

With the help of our County Councillor we were able to arrange for bollards to be put up on the corner of Chapel Lane and there will be others soon on the corner leading into Copperfields, off the West Wycombe Road, to stop people blocking the pavement.

Pavement Parking

Many of you complain about vehicles parked on pavements. When the Special Parking Areas (SPA's) come into force in October 2008 the whole of the Wycombe District Council area will be policed by traffic wardens. Parking on pavements, without leaving a one metre space for pedestrians has always been an offence, will then be 'policed' more strictly. *You have been warned!*

Neighbourhood Action Group (NAG)

We have attended six meetings of our local Neighbourhood Action Group.

These groups have been set up by Thames Valley Police to put "local" back into policing. They are about making sure that the police, working with other agencies, such as us, provide the service that people want, tackling those issues that are important to local residents.

Buckinghamshire currently has 57 neighbourhood policing areas with their own NAGS which determine the priorities and objectives for each area. This could range from tackling anti-social behaviour, clearing litter to parking and speeding issues.

We think this initiative will benefit us all in the end. We are grouped with the villages of Piddington and Wheeler End, Stokenchurch and Lane End.

Speed Review

We were consulted on the BCC speed review for areas 5 and 8 which include all the roads in our Parish.

We are running out of patience with the speed review department because it is 2 years since we asked them to take down the incorrect sign in Bradenham Road saying "Welcome to West Wycombe" We are promised it will happen soon!

Burial Ground

The Burial Ground car park has been resurfaced and a kissing gate has been installed to make it easier for all of you that like to walk in this peaceful area.

Getting Closer to Communities (GC2C)

It has taken about 3 years to get this Bucks County Council initiative off the ground.

The initiative, which pulls together our local Bucks County Councillors, Wycombe District Councillors, representatives of the departments at Bucks County Council who deal with our area and your own Parish Councillors together to try and sort out any problems we may be experiencing.

We belong to the Marlow Rural Area which includes Hambleden, Marlow Bottom, Lane End, Stokenchurch, Piddington and Wheeler End.

Being mostly rural parishes we have a lot of the same issues in common and can all help each other. The police also attend these meetings and the outlook is that the initiative is likely to prove to be a successful venture.

Buildings Maintenance

We have been concerned about the condition and maintenance of the buildings in West Wycombe Village so we arranged a meeting with The National Trust in November and hopefully we shall see some improvements in the look and repair of the buildings this coming year.

Rain

BCC have jetted all the gullies and drains for us this year that caused problems the previous year when it rained heavily and The National Trust put in a drain to help with the flooding in The Swan Yard.

Planning

We have been very concerned by the number of plans we have had other the last few years where developers want to knock down family homes and build single occupancy flats.

We have lobbied WDC hard to try and get the parking sorted out with these developments, with little success, because we know parking is a major problem everywhere in West Wycombe.

WDC have to abide by BCC and Government guidelines on parking and width of roads etc which mean our concerns are sidelined. The SPA's might help with parking but we worry where people will be able to park when many of our smaller roads especially off West Wycombe Road, just cannot take any more parked vehicles.

We are, of course, aware that we do need affordable homes in and around West Wycombe but we think we are reasonably well served here and further down the West Wycombe Road with these types of properties.

We are concerned that taking away family homes alters the dynamics our community.

We attended and spoke at the planning enquiry for 473 West Wycombe Road as did The National Trust. Although the developers won the appeal we did secure a filter lane for this development from the Pedestal roundabout to try and make the road safer.

We are watching the development closely to ensure the filter lane is built.

We have 42 extra houses paying council tax this year making 550 in the parish and if they become occupied another 34 next year will be eligible.

We continue to answer resident's enquiries about boundary's, lawfulness of buildings and trees and hedges.

What's the Precept?

This is a question we're often asked.

The precept is the money that we annually request from Wycombe District Council to run the Parish. This appears on your council tax statement. Parish Councils are not capped as to how much they can request, but obviously we want to give good value for the money we receive.

National Trust

We would like to thank Nick Phillips for his continuing support of this Parish Council and being part of our team. Mr Phillips is the National Trust's Property Manager for West Wycombe and it helps us to have him come to our meetings to answer any questions relating to the Village and the surrounding countryside.

Highways On Call

Need a hole filling in the road, street light not working, road sign broken, tree or hedge over-hanging the pavement?

Telephone Highways On Call on
0845-230 2882

or you can log-on to the website and report your problem online at:

www.buckscc.gov.uk/hoc



Belonging

The Parish Council belongs to The Bucks Association Of Local Councils and our Chairman sits on the Executive Committee.

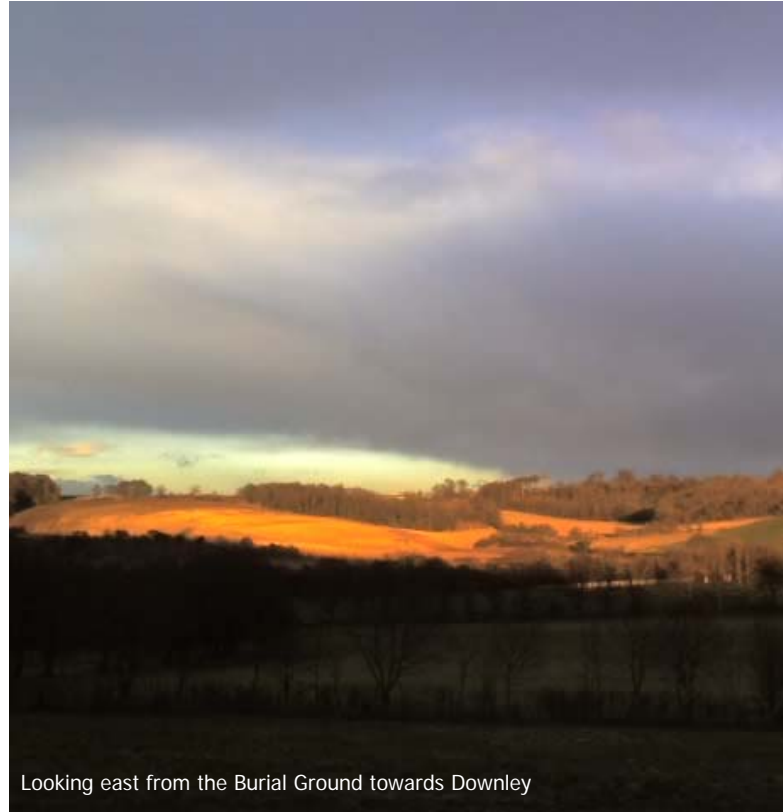
We also belong to the Wycombe Association of Local Councils of which our Chairman is part of the training team and Cllr. Mrs. Smith is also the Parish Council Representative on the Wycombe District Councils Standards Committee who make sure all Councils and Councillors behave themselves and comply with legislation.

In addition to the NAG and GC2C initiatives mentioned on page two The Parish Council attends The Rural Forum Meetings at Wycombe District Council and the Local Area Committee Meetings organised by Bucks County Council, which mainly deal with highways issues; we managed to secure our continuing bus services by regularly talking to BCC.

By our attendance at these meetings we make sure our Parish is definitely in the front line and is fully informed of any new developments and to put in our views and ideas.

We have been asked to take part in the pilot trial of the new Pathfinder initiative between BCC and WDC and of course the logo at the top of this page signifies that we are an accredited Quality Parish Council.

Whilst we only meet once a month in the Church Room we're kept busy.



Looking east from the Burial Ground towards Downley

Thank you

The Parish Council would like to thank everyone who regularly attend our meetings. We really do appreciate your support.

It is impossible for us to be everywhere and see everything that might not be quite right in the Parish so we rely on you, all our Parishioners, to be our eyes and ears and to contact us if you see anything untoward.

If there are any issues you wish us to consider please use our website or talk to any of us.

Our phone numbers are on the website and in the notice boards.



Whilst we might not know all the answers we will do our best to get the information you need even if it is at times, unpalatable!

We would like to thank our County Councillor Frank Downes, who is also one of our Parish Councillors and Jean Teesdale and Ian McEnnis our Wycombe District Councillors for their help and support this year.

We are always pleased to see them at the many meetings and training events too, which means we are all looking for the best solutions for the Parish!

the Parish Council would also be nothing without enthusiastic, interested

And caring Councillors.

Being a Councillor can at times be frustrating and time consuming. You need bucketfuls of patience, tolerance and a sense of humour!



Your Parish Council in West Wycombe works well as a team, each member bringing in their expertise and knowledge but our success is due largely to the skilled dedicated support that we receive from our Clerk, Sharon

The Councillors don't always see eye to eye on everything but we all agree that we want West Wycombe to be protected but not stifled and a very good, safe place to live.

Website

Our website continues to grow and flourish. As well as reading all the minutes of our meetings you can also keep up to date on who's planning to build what in the Parish; our Directories are full of useful local contacts.

You can also email our webmaster with details of your business, organisation, or local activities for inclusion.

This year we've added a Google Map which shows the Parish boundary as well as pictures of places of interest.

Support

We've been pleased to be able to continually support both the Library and The Village Hall with their plans this year because these buildings and the facilities they provide are much needed in West Wycombe.

The Financial Report

Receipts and Payments Account for the Year ended 31st March 2008

Receipts	Year Ended 31.3.2007	Year Ended 31.3.2008
Opening balance	12902.93	3552.48
Precept	32000.00	32000.00
Interest	474.86	302.39
HM Customs	4093.83	2240.05
Burials/Memorials	650.00	150.00
Refund towards telephone line	276.29	245.06
Refund towards training	0.00	30.00
Prize for Annual Report	200.00	0.00
WDC refund—air quality elec	347.98	881.08
Income for use of equipment	0.00	180.00
Total income	51125.89	39401.06
 Payments		
Administration	10215.02	11521.39
S137 payments	2254.17	689.39
 Operational costs:		
Street lighting	15628.39	4303.03
Contribution to High St Lights	5000.00	0.00
Burial ground	4640.84	7495.01
School crossing	1548.72	1548.72
Training	20.00	118.32
1/3 Cost new PC etc (Capital)	0.00	370.54
Clear path to Piddington (Misc)	0.00	1300.00
Litter picking equipment (Misc)	0.00	55.00
Highway weed killer (Misc)	0.00	342.02
Bulb planting (Misc)	0.00	471.10
Bus shelter cleaning (Misc)	0.00	45.00
West Wycombe Comm. Assc.	0.00	1500.00
Subs (Misc)	332.44	267.36
VAT on purchases	4093.83	2240.05
Room hire	0.00	120.00
Bank charges (Misc)	0.00	2.32
School Footway (Misc)	3000.00	0.00
Towerage Lane Grips (Misc)	300.00	0.00
Tree Works (Misc)	540.00	0.00
Total Expenditure	47573.41	32398.25

Cumulative Balance

Opening Balance	12902.93	3552.48
Income	38222.96	35848.58
	51125.89	39401.06
Expenditure	47573.41	32398.25
Balance	3552.48	7002.81

Bank Reconciliation as at 31.3.2008

Balances:

Barclays Community Account	2922.86
Plus VAT refund	2240.05
	5162.91
Less unrepresented cheque no.1074	120.00
Balance	5042.91

Business Premium Account	130.54
Bank of Ireland Account	1829.36
Total	7002.81

Balance agrees with receipts and payments account.

Report of the Responsible Financial Officer - Year ended March 2008

We did not increase our precept for the year 2007/08 and therefore have been very careful with expenditure.

Our major projects have been to resurface the car park and paths within the burial ground and the installation of kissing gate into the top field. Apart from the addition of a larger refuse bin we do not have any further plans for the Burial Ground this year.

We joined forces with Piddington and Wheeler End Parish Council to have the footway from West Wycombe to Ham Farm cut back, this created a much wider path for those residents who chose to walk its length.

Hundreds of daffodil bulbs have been planted along the Park wall.

We looked at the cost of installing 4 extra street lights near the school, but at £13,000 it was decided that we must save for this over the next couple of years.

An energy audit is to be commissioned on our street lighting but in order to save in the long term we may have to invest in low energy fittings.

The Parish Council made contributions towards the Community Library and to West Wycombe Community Association for improvements to the Village Hall.

We purchased a new PC and the cost of this was shared three ways between Piddington and Wheeler End PC and Hambleton PC, as is the cost of the telephone line.

Wycombe District Council funds the costs of running the air pollution monitor in the Village Hall Car Park and we are about to receive the first report on its findings.

Your Councillors for 2008/2009

Cllr. Mrs Vicki Smith, 2 High Street, West Wycombe, HP14 3AE
Tel: 01494 532239 email: chairman@westwycombe.org.uk

Cllr. Roger Seymour, 78 Chorley Road, West Wycombe, HP14 3AR
Tel: 01494 439081 (no email address at the moment)

Cllr. Frank Downes, High Barn, Flint Hall Farm, West Wycombe, HP14 4ES
Tel: 01494 440860 email: frankdownes@westwycombe.org.uk

Cllr Mrs Carole Dakin, 18 Copperfields, West Wycombe Road, HP12 4AN
Tel: 01494 437670 email: caroledakin@westwycombe.org.uk

Cllr Danny Callaghan, 33 Bradenham Road, West Wycombe, HP14 4EY
Tel: 01494 562346 email: danny@westwycombe.org.uk

Cllr Mrs Ailsa Harris, 482 West Wycombe Road, HP12 4AH.
Tel: 01494 448234 email: ailsaharris@westwycombe.org.uk

Cllr Neil Timberlake, 8 Portway Drive, West Wycombe, HP12 4AU.
Tel: 01494 459004 email: neiltimberlake@westwycombe.org.uk

District Cllr Mrs Jean Teesdale, 43 Green Lane, Radnage, Bucks
Tel:01494 483298 email: jean_teesdale@wycombe.gov.uk

District Cllr Mr Ian McEnnis, 49 London Road, High Wycombe, HP11 1BN
Tel:01494 462834 email: ian_mcennis@wycombe.gov.uk

County Cllr Mr Frank. Downes – as above

Clerk: Mrs Sharon L. Henson, 18 Portway Drive, West Wycombe, HP12 4AU
Tel: 01494 448048 email: clerk@westwycombe.org.uk